

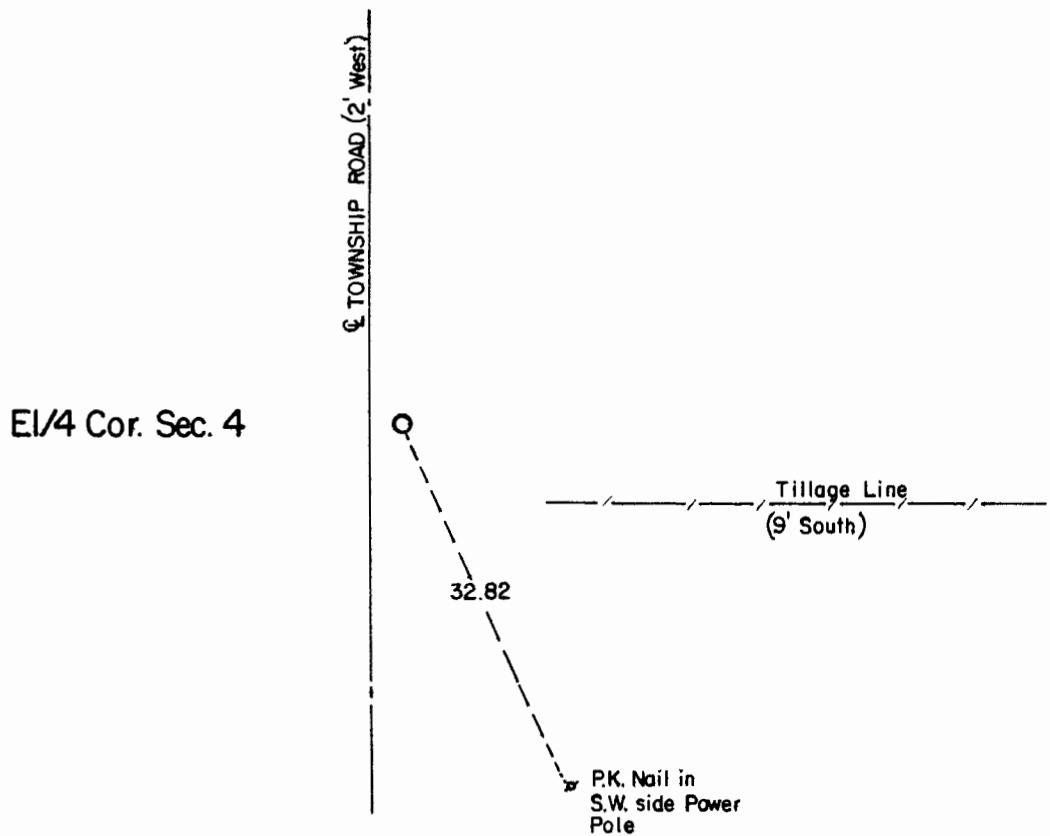
# CERTIFICATE OF LOCATION OF GOVERNMENT CORNER

**East Quarter** Corner of Section **4** , Township **107** , Range **41** 5th P.M.  
STATE OF MINNESOTA, County of Murray.

**Statement:** Aug. 23, 1989 - Found a field stone standing in an upright position.  
Placed Mn/DOT Cast Iron monument at the road surface.



## SKETCH OF REFERENCE TIES



Statement of evidence relative to this corner location is on the back of page.

I hereby certify that this document and the data contained herein was prepared by me or under my direct supervision and that I am a duly Registered Land Surveyor under the laws of the State of Minnesota.

  
Duane A. Bonnema

*Nov 4, 1989*  
Date

Minnesota Registration No. 14895

OFFICE OF THE COUNTY RECORDER  
COUNTY OF MURRAY

**NOV 15 1989**

I hereby certify that this document was filed in the County Recorder's office at \_\_\_ M. on the \_\_\_ day of \_\_\_\_\_ A.D., 19\_\_

County Recorder 

By \_\_\_\_\_, Deputy

DOCUMENT NO. \_\_\_\_\_

East Quarter Cor. Sec. 4 T107N-R41W

Statement:

August 1861

Original Government Land Office Surveyor L. G. M. Fletcher records in his field notes, "built mound with trench pits, charred stake, per instructions."

Aug. 23, 1989

Duane A. Bonnema, L.S. Reg. No. 14895, dug at this location found a field stone 17 in. x 9 in. x 11 in. standing upright, 2 ft. below the road surface. A 14 in. x 10 in. x 7 in. field stone and a 14 in. x 11 in. x 8 in. field stone were found on the west side of the upright stone. The hole was excavated 5 ft. south of the three stones and to a depth of 4 ft. below the road surface. No further evidence of corner monumentation was found. Natural ground was found to be located 1.5 feet below the road surface. A Minnesota Department of Transportation Cast Iron Monument was placed at the road surface over the upright stone.